

MOD HEX100



Light Efficiency:

40 Lumen/Watt

Light Quality:

CRI: 76.4

Color Temperature:

7640 K

Output: 891 lm

Peak: 2965 cd

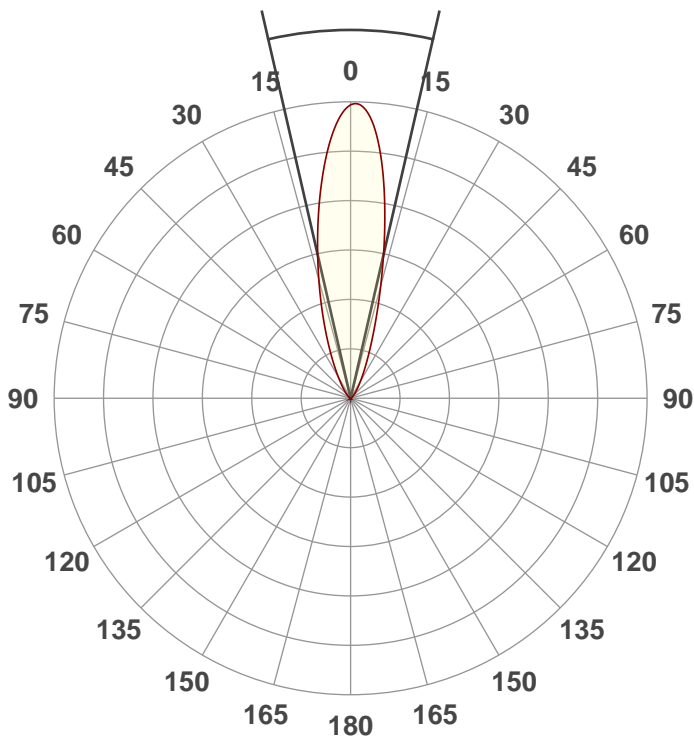
Power: 22.3 W

PF: 0.53



Beam Angle

25.8°



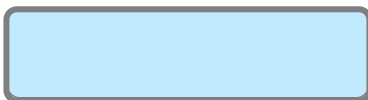
Test:

40Deg White

Date:

11/21/2018

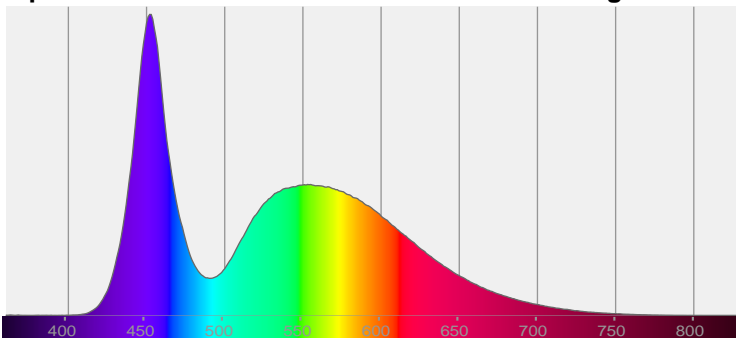
Note:



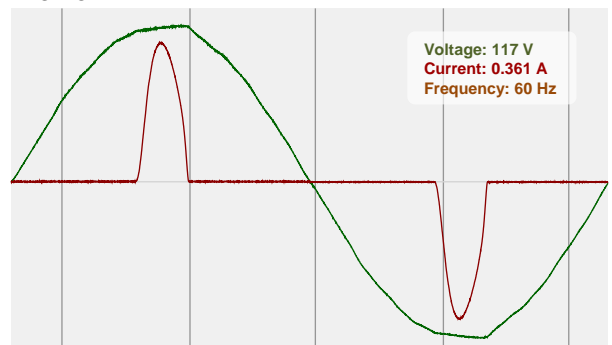
CIE 1931
x: 0.300
y: 0.306

Spectra

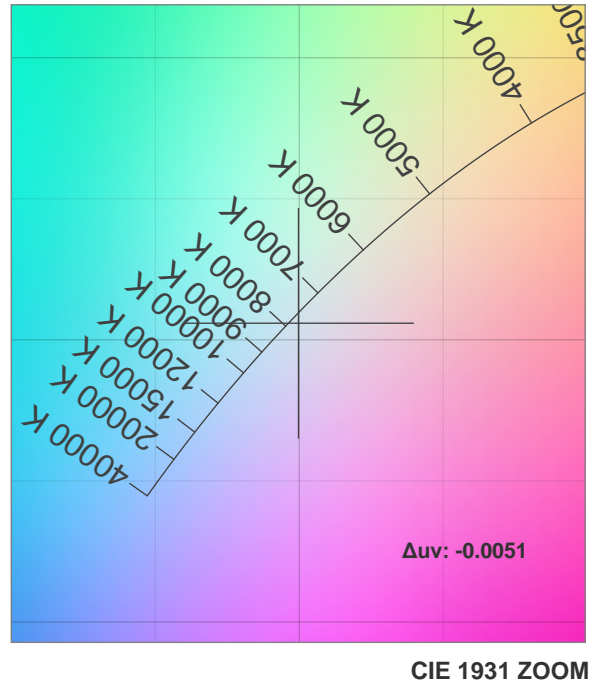
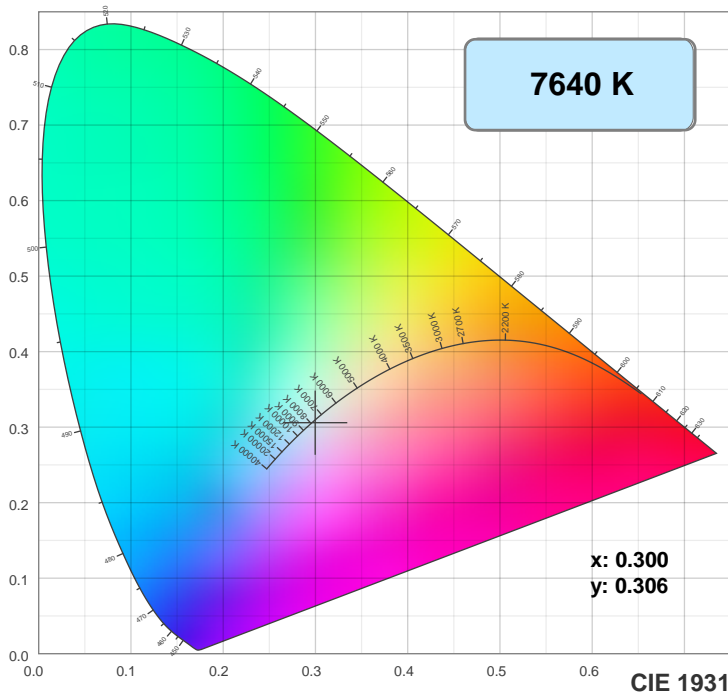
Dominant Wavelength: 460nm



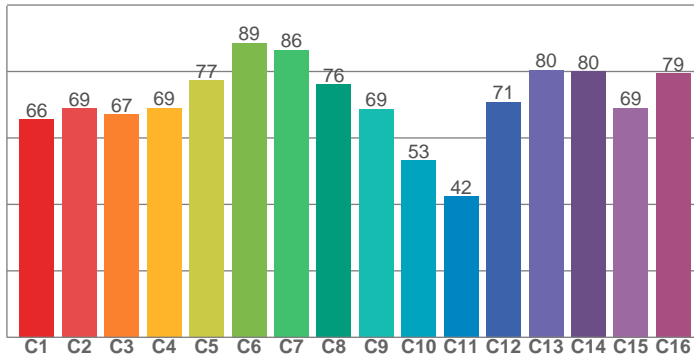
Power



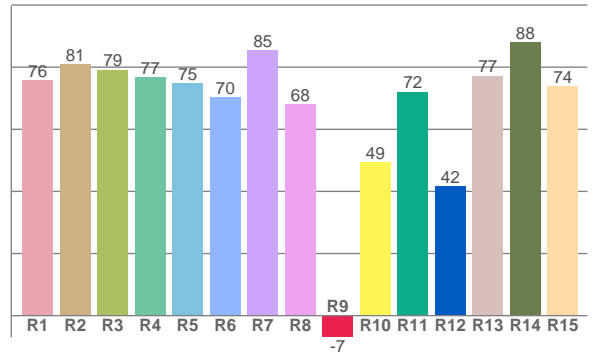
Color Details



TM30: 71.1



CRI: 76.4 (R1-R8)



CRI R values, only R1-R8 are used to calculate final CRI value

R1	R2	R3	R4	R5	R6	R7	R8	R9	R10	R11	R12	R13	R14	R15
75.7	80.9	79.2	76.7	74.9	70.4	85.4	68.0	-7.0	49.5	72.1	41.8	77.2	88.1	73.7

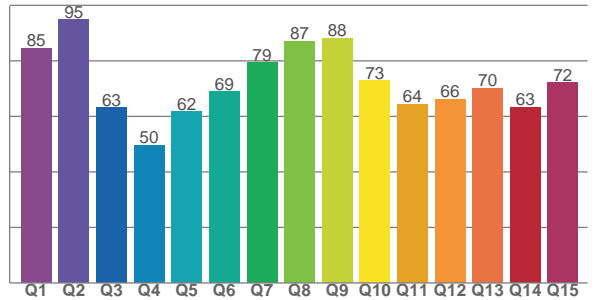
TM30 C values, 16 binned values out of total of 99 C values

C1	C2	C3	C4	C5	C6	C7	C8	C9	C10	C11	C12	C13	C14	C15	C16
65.6	68.9	67.1	69.0	77.3	88.6	86.4	76.2	68.7	53.2	42.3	70.9	80.5	80.1	69.1	79.5

CQS Q values

Q1	Q2	Q3	Q4	Q5	Q6	Q7	Q8	Q9	Q10	Q11	Q12	Q13	Q14	Q15
84.6	94.9	63.1	49.6	61.6	68.9	79.3	87.2	88.1	72.8	64.4	66.2	70.2	63.3	72.1

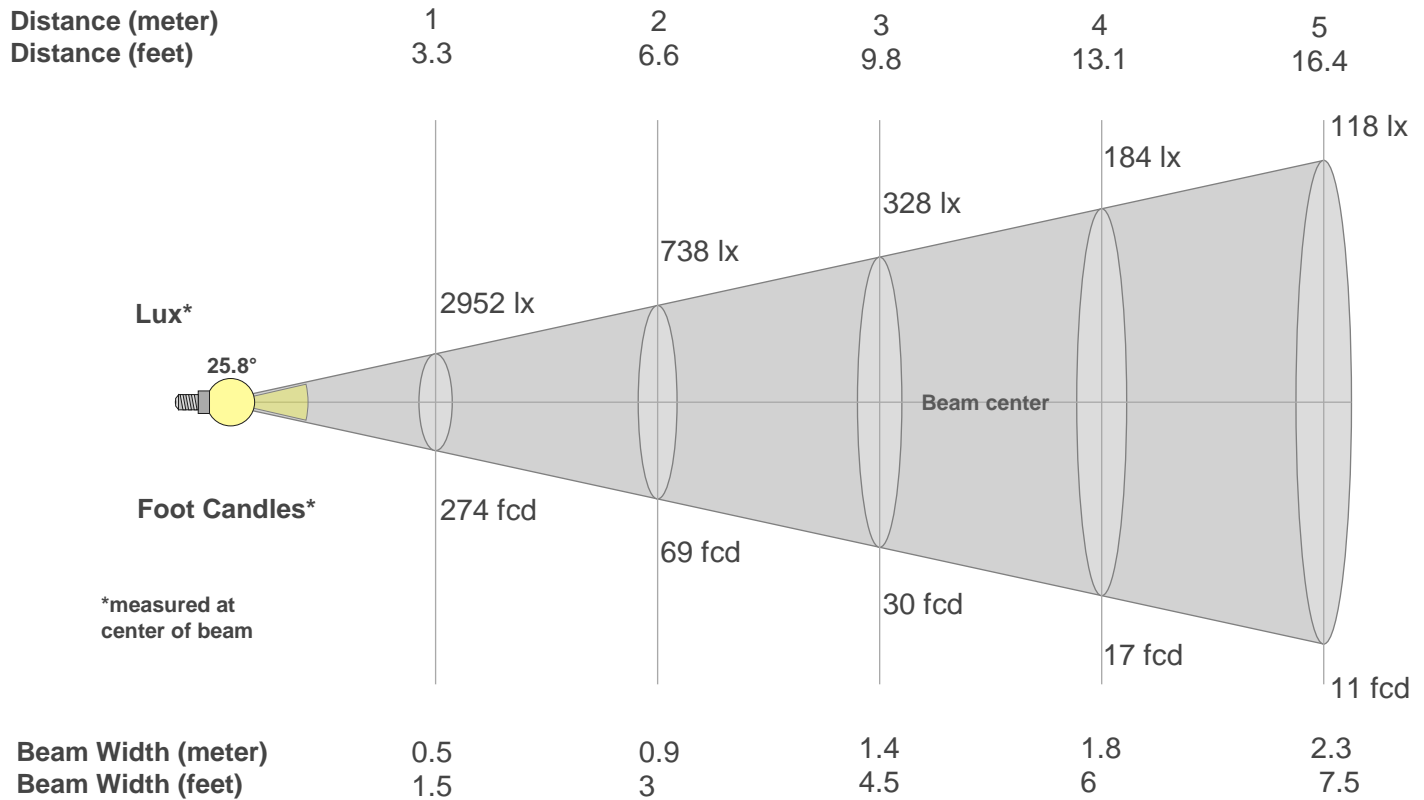
CQS: 70.0



Color Parameters

Color Temperature	Color Rendering Index	Red Component	Color Fidelity	Color Gamut	Color Quality Scale	Color Coordinate CIE 1931	Color Coordinate CIE 1931	Color Coordinate	Color Coordinate	Color Deviation from Black Body
CCT	CRI	CRI R9	TM30 Rf	TM30 Rg	CQS	x	y	u	v	Δuv
7640 K	76.4	-7.0	71.1	92.9	70.0	0.300	0.306	0.197	0.302	-0.0051

Beam Details



Beam Intensities from 1-20m

m	1	2	3	4	5	6	7	8	9	10	11	12	13	14	15	16	17	18	19	20
ft	3.3	6.6	9.8	13.1	16.4	19.7	23	26.2	29.5	32.8	36.1	39.4	42.7	45.9	49.2	52.5	55.8	59.1	62.3	65.6
lx	2952	738	328	184	118	82	60	46	36	30	24	20	17	15	13	12	10	9	8	7
fcd	274.2	68.6	30.5	17.1	11	7.6	5.6	4.3	3.4	2.7	2.3	1.9	1.6	1.4	1.2	1.1	0.9	0.8	0.8	0.7

Intensities in 0° C-plane

0°	2°	4°	6°	8°	10°	12°	14°	16°	18°	20°	22°	24°	26°	28°	30°	32°	34°	36°	38°
2952	2846	2657	2415	2143	1867	1600	1352	1126	927	754	609	488	390	311	249	199	160	130	105
100%	96%	90%	82%	73%	63%	54%	46%	38%	31%	26%	21%	17%	13%	11%	8%	7%	5%	4%	4%

Intensities in 90° C-plane

0°	2°	4°	6°	8°	10°	12°	14°	16°	18°	20°	22°	24°	26°	28°	30°	32°	34°	36°	38°
2952	2846	2657	2415	2143	1867	1600	1352	1126	927	754	609	488	390	311	249	199	160	130	105
100%	96%	90%	82%	73%	63%	54%	46%	38%	31%	26%	21%	17%	13%	11%	8%	7%	5%	4%	4%

Intensities in 180° C-plane

0°	2°	4°	6°	8°	10°	12°	14°	16°	18°	20°	22°	24°	26°	28°	30°	32°	34°	36°	38°
2952	2948	2832	2613	2316	1977	1634	1315	1040	814	636	499	393	312	249	200	161	131	107	87
100%	100%	96%	89%	78%	67%	55%	45%	35%	28%	22%	17%	13%	11%	8%	7%	5%	4%	4%	3%

Intensities in 270° C-plane

0°	2°	4°	6°	8°	10°	12°	14°	16°	18°	20°	22°	24°	26°	28°	30°	32°	34°	36°	38°
2952	2948	2832	2613	2316	1977	1634	1315	1040	814	636	499	393	312	249	200	161	131	107	87
100%	100%	96%	89%	78%	67%	55%	45%	35%	28%	22%	17%	13%	11%	8%	7%	5%	4%	4%	3%

Beam Angle 50%	Field Angle 10%	Cutoff Angle 2,5%	Intensity Ratio in 120° Cone	Intensity Ratio in 90° Cone
25.8°	54.9°	81.1°	99.6%	95.9%